



# VALENTIN GROUP

Dream. Build. Live.

COMPANY PROFILE

**Dream. Build. Live.**

# Table of Content

<b>About Valentino Group</b>	<b>1</b>
<b>Valentino Group Journey</b>	<b>3</b>
<b>Build by Legacy to Vision</b>	<b>5</b>
<b>Why Valentino Group</b>	<b>8</b>
<b>Valentino Group Brand</b>	<b>9</b>
<b>Valentino Group Core Values</b>	<b>10</b>
<b>Granite Tile &amp; Sintered Stone</b>	<b>11</b>
<b>Granite Tile &amp; Sintered Stone Project Reference</b>	<b>19</b>
<b>Roshan</b>	<b>39</b>
<b>Kohler</b>	<b>50</b>

# About Valentino Group

Valentino Group began its journey in 1989 under Toko Cahaya Harapan, initially operating as a trusted distributor of ceramic tiles from renowned brands. Over the decades, the company evolved beyond distribution—growing into a principal group known for its mastery in sourcing and curating high-quality surface materials for the Indonesian market.

Today, under PT Cahaya Lestari Permai Abadi, Valentino Group stands as the force behind some of Indonesia's most recognized and respected surface material brands, including Valentino Gress. The group's portfolio spans from homogeneous and porcelain tiles, to sintered stone, granite, WPC/SPC flooring, flexible stone, and modern sanitary solutions — offering complete material solutions for every design vision.

What sets Valentino Group apart is its unwavering dedication to quality curation. Each material is selected through a meticulous process, sourced from world-class factory partners both locally and internationally, ensuring exceptional design, durability, and performance.

Beyond material excellence, Valentino Group prides itself on reliable service, long-term partnerships, and a customer-first approach. With a legacy built on trust and innovation, we continue to empower architects, designers, and developers to bring their boldest ideas to life.

## Vision

To be the leading and most reliable supplier of homogeneous and porcelain tiles in Indonesia.

## Mission

Valentino Gress is committed to building long-term relationships with customers across Indonesia by consistently delivering the finest quality products and services.

About Valentino Group



VALENTIN  GROUP

# *Valentino Group Journey*

## 1989

Rudy Yahya founded Cahaya Harapan, a humble ceramic tile shop — the beginning of a vision.

## 2011

Valentino Gress was born under PT Cahaya Lestari Permai Abadi — a new standard for tile excellence.

## 2013

3rd showroom launched in Baliwerti, Surabaya — strengthening East Java presence..

## 1999

Expanded into ceramic distribution with OEM systems, serving wider markets across Indonesia..

## 2012

Opened the 2nd showroom in Alam Sutera, Serpong — bringing premium surfaces closer to urban designers.

## 2023

Launched two new brands:  
· Roshan – Decorative Surface Expert  
· Super Depo Bangunan Indonesia –  
For broader material access

## 2021

Opened 5th showroom in BSD and proudly partnered with KOHLER for sanitary excellence.

## 2020

Surpassed 1,000 retailers and projects nationwide — trusted across residential and commercial builds.

## 2024

Introduced Black Rock Gress — bold, modern, and powerful under PT Cahaya Lestari Permai Abadi.

## 2025

**Rebranding as Valentino Group, carrying the philosophy: Dream. Build. Live.** — unifying a legacy of design excellence, curated materials, and continuous innovation.

Marking the next chapter with the opening of our 6th and 7th **House of Valentino in Surabaya and Bali** — bringing timeless surfaces closer to dreamers and builders across Indonesia.

# From Legacy

The Legend



The Finest Design & Quality  
Granite Tile

Valentino Gress was born from a journey that began in 1989—not just as a tile supplier, but as a silent partner in countless spaces that **shaped lives**.

Over time, we evolved from offering finely crafted granite tiles to curating possibilities.

# To Vision

Present Look



Dream. Build. Live.

Today, we are more than a provider of premium surfaces; we are a design partner for architects, developers, and visionaries across Indonesia.

Valentino Gress transformation reflects a deeper purpose: to inspire, to empower, and to build with intention. Through thoughtful curation, global partnerships, and a dedication to quality, Valentino Group moves from supplying to shaping. From granite to dreams.

From products to purpose. We are proud to carry forward our new identity with one guiding philosophy:  
**Dream. Build. Live.**





*Elevate Your Space with*





#### **Proven Legacy**

Over 30 years of craftsmanship, trust, and innovation.



#### **Industry Pioneer**

A principal brand redefining design and quality.



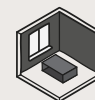
#### **Reliable Supply**

Guaranteed stock availability for seamless projects.



#### **Curated Global Designs**

Handpicked, trend-setting styles from top sources.



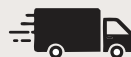
#### **Versatile Application**

Perfect for any space, from homes to commercial projects.



#### **Beyond Standards**

Rigorous checks ensure perfection in every tile.



#### **On-Time Delivery**

Precision logistics for on-time arrival



#### **Dedicated Support**

A responsive team guiding you every step.



#### **Expert Installation**

Professional guidance for flawless application.



#### **Seamless Shading**

Perfectly coordinated tones for a refined look.



#### **Sustainable Choice**

Eco-friendly materials for a greener future.



#### **Certified Excellence**

SNI & ISO 9001:2008 quality assurance.



# Valentino Group Brand

Granite Tile

VALENTINO  GRESS **SAKARMARBO**

Decorative Surface

 **ROSHAN**

REMO RUDY GRESS  COLMAR  **OXFORD**

Sintered Stone

**BLACK ROCK**  **GRESS**

Authorized Dealer

**KOHLER®**





## Core Values

# F O C U S E D

### **F – Fear of God**

We believe that true success is built on a foundation of faith, guiding us to act with honesty, humility, and responsibility in everything we do.

### **O – Optimism for Improvement**

Challenges are not obstacles—they are opportunities. We embrace growth, constantly learning and evolving to reach new heights.

### **C – Commitment to Integrity**

Our word is our bond. We take pride in delivering what we promise, upholding transparency and trust in every partnership.

### **U – Unity in Diversity**

Greatness is built by people from all walks of life. We celebrate different perspectives, knowing that collaboration fuels innovation.

### **S – Service Excellence**

Every detail matters. From the way we treat our customers to the quality of our work, we strive to exceed expectations every time.

### **E – Efficiency & Effectiveness**

Time and resources are valuable. We work smart, stay focused, and ensure that every effort brings meaningful impact.

### **D – Discipline within self**

Success starts with self-mastery. We hold ourselves accountable, stay committed, and push beyond limits to achieve greatness.





# *Granite Tile & Sintered Stone*

Granite Tile

Sintered Stone

VALENTINO  GRESS

SAKARMARBO

BLACK ROCK  GRESS

RUDY GRESS

 COLMAR

 OXFORD

REMO



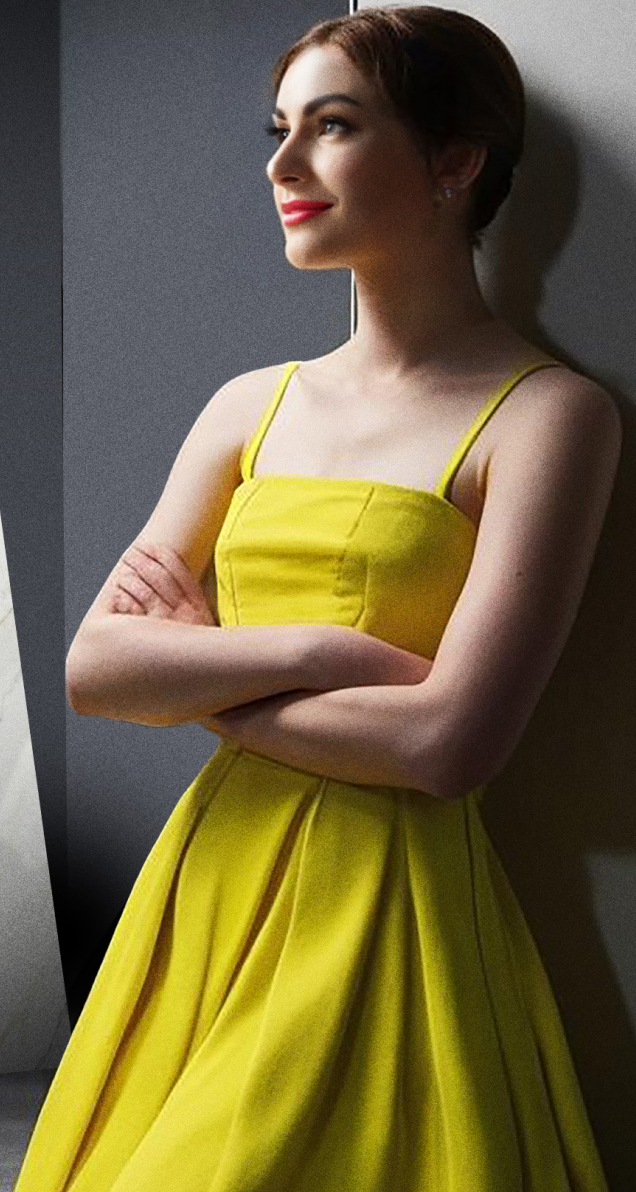
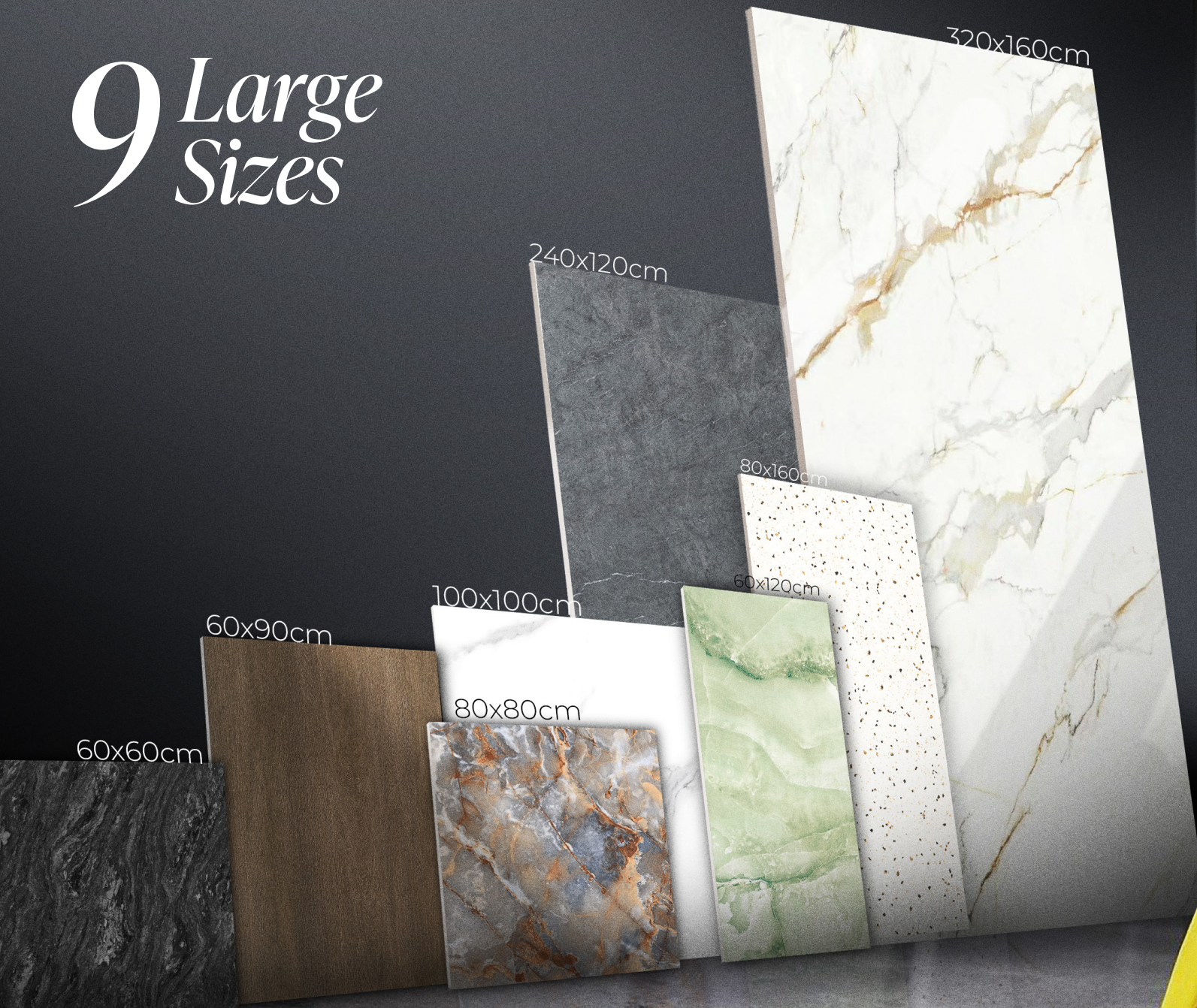


# 600+ *Design Choice*

Valentino Group is a leading provider of premium cladding materials, specializing in high-quality surfaces that blend design, durability, and innovation. With a commitment to elevating architectural and interior spaces, Valentino Group offers a diverse range of curated design options — from timeless marble looks, natural stone textures, industrial cement aesthetics, and warm wood grains, to sleek monochrome tones. For projects that demand uniqueness, we also provide custom design solutions tailored to your creative vision. Every collection is crafted to meet the demands of modern living and visionary design.



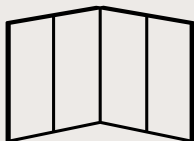
# 9 Large Sizes





# *More Sizes* *More Possibilities*

Valentino Gress adapts seamlessly to any size, application, and space, making it the perfect choice for all types of projects. With no limitations in large-format sintered stone, it redefines possibilities—going beyond traditional formats to bring avant-garde designs to life.



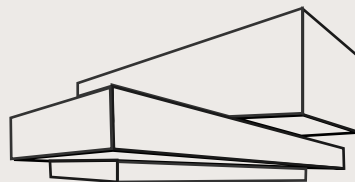
## **Walls**

Interior / Exterior Walls



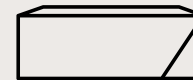
## **Floors**

Interior / Exterior Floors



## **Facades**

Exterior



## **Countertop & Furniture**

Interior / Exterior Countertop

# *ADVANCE DECORATIVE SURFACE*

## *Polished*

### *Glazed Polished*

A surface that captures and reflects light with a mirror-like shine, creating an air of luxury and sophistication. Perfect for those who seek a bold statement with a high-gloss, polished aesthetic that enhances the depth and richness of any space.





## *Matt*

Soft, warm, and eternally elegant, this finish offers a muted, diffused look that minimizes reflections, bringing out the natural depth of the material. A perfect balance between modern simplicity and classic charm, ensuring your space remains effortlessly stylish.

# *Matt*



## *Matt Carving*

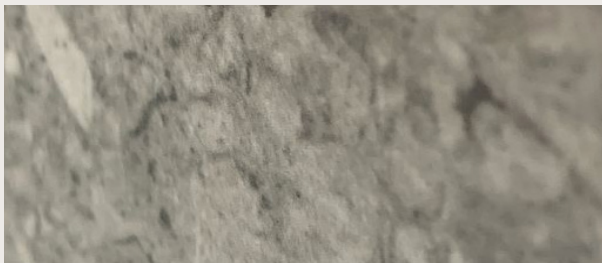
A bold mix of gloss and matte, creating dynamic contrasts that enhance textures and patterns. This finish offers the best of both worlds—the depth and richness of gloss with the softness of matte, making it a versatile choice for those who appreciate unique, artistic designs.

## *Satin*

More than just a visual experience, this finish offers a silky, ultra-smooth texture that's pleasant to the touch. Engineered to be fingerprint-resistant, it maintains its pristine look while providing a sense of refined luxury and comfort.

## *Matt Textura*

Designed for the modern, industrial aesthetic, Urban Matte delivers a sleek, contemporary feel with a fine-textured, non-reflective surface. Ideal for urban-inspired interiors that demand a bold yet understated look.





BLACK ROCK  GRESS

# *TRUE VEIN TECHNOLOGY*

Imagine cutting through a slab of natural marble—every layer reveals the same elegant veins, flowing seamlessly through its core. That's True Vein. Unlike ordinary sintered stone that only looks real on the surface, Valentino's veins run deep, just like nature intended.

**Authentic. Enduring. Unmatched.**



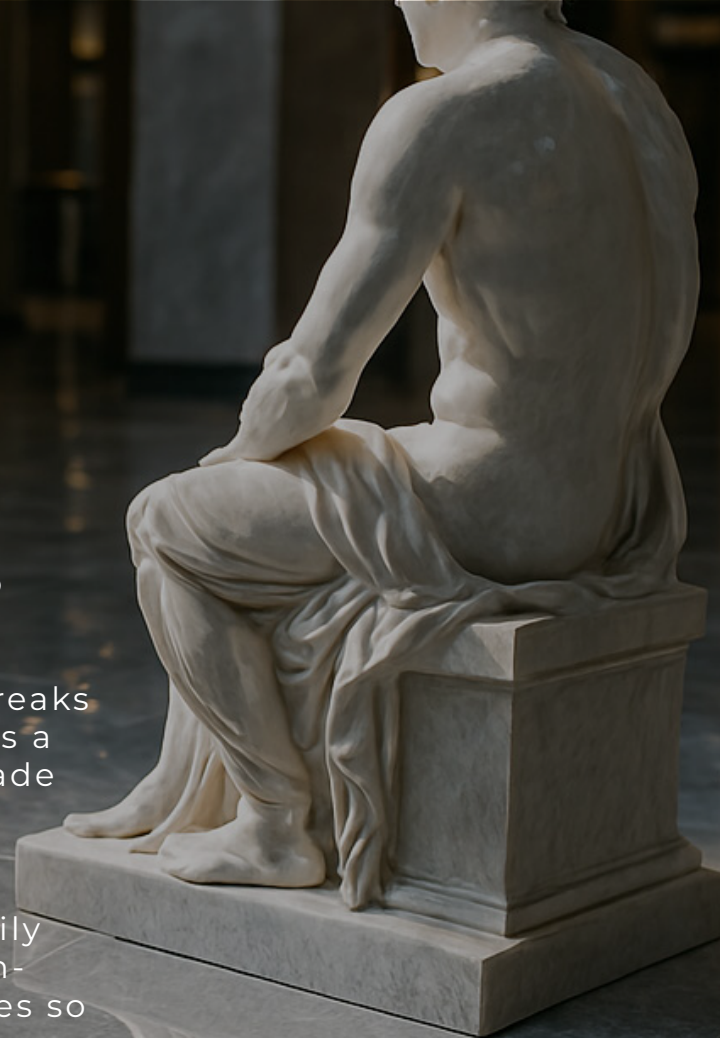
# *DIAMANS: The Brilliance Beneath Your Feet*

Introducing DIAMANS — the newest surface innovation by Valentino Group, inspired by the strength and elegance of a diamond.

In a world where beauty often comes with compromise, DIAMANS breaks the rule. Its brilliance doesn't fade, and its gloss isn't delicate. This is a surface engineered to shine and endure — a level beyond glossy, made for real living, not just showroom displays.

More than scratch-resistant — it's scratch-defiant. Even under heavy foot traffic, dragging furniture, or the chaos of daily life, DIAMANS remains flawless. Whether in commercial spaces, high-traffic homes, or bold interior visions, it stands its ground — and does so with style.

This is Valentino's gloss redefined — as tough as diamond, as stunning as ever.







Valentino Group

*Shopping Mall*

# Project Reference

Granite Tile & Sintered stone

## **JABODETABEK :**

AEON MALL BSD  
AEON MALL SOUTHGATE  
AEON MALL JGC  
TRANS MALL BINTARO  
CIPUTRA MALL  
GALUH MAS MALL  
GRAMEDIA WORLD BEKASI  
GRAMEDIA WORLD KARAWANG  
LIVING PLAZA BINTARO  
LIVING PLAZA JABABEKA  
LIVING PLAZA BEKASI  
MALL CIPUTRA TANGERANG  
MALL CITRA RAYA CIKUPA  
MALL OF INDONESIA  
MARGO CITY MALL  
METRO PLAZA SENAYAN  
METROPOLITAN MALL  
SUPERMALL KARAWACI  
TRANS STUDIO CIBUBUR  
TRANS BEKASI MALL  
TRANS CIBUBUR MALL  
URBANA CINERE MALL  
METRO PLAZA SENAYAN  
MALL KELAPA GADING

## **BANTEN :**

CITIMALL CILEGON

## **JAWA TENGAH :**

DP MALL SEMARANG  
MALL TENTREM SEMARANG

## **JAWA TIMUR :**

MARVEL CITY SURABAYA  
SUPERMALL PAKUWON  
TRANSICON SURABAYA

## **SUMATERA :**

GRAMEDIA WORLD  
LIVING PLAZA PEKAN BARU

## **KALIMANTAN :**

GRAMEDIA WORLD  
LIVING PLAZA PEKAN BARU

## **SULAWESI :**

GRAND MALL NIRVANA PALU  
LIVING PLAZA MAKASSAR  
PALU GRAND MALL

## **BALI :**

PARK MALL TUBAN BALI  
TRANS BALI MALL





Valentino Group

*Appartement*

# Project Reference

## **JABODETABEK :**

PONDOK INDAH RESIDENCE  
TAMAN ANGGREK RESIDENCE  
THE ELEMENTS  
NEWTON 1  
AERIUM  
AEROPOLIS  
ARUMAYA RESIDENCE  
BIDEX  
BRANZ BSD  
BREEZE TOWER  
CASA DE PARCO BSD CITY  
CAPITOL PARK  
CIPUTRA WORLD 2  
CIPUTRA PURI INTERNATIONAL  
CIPUTRA WORLD NEWTOWN 1  
CITRA LAKE SUITE  
CITRA LIVING  
ECO HOME CIKUPA  
ENVIRO  
GRAND VALORE CONDOMINIUM  
GOLD COAST RESIDENCE  
KAMPUNG AKUARIUM  
KAWANA GOLF RESIDENCE  
KEMANG CLUB VILLAS  
KEMANG VIEW  
KOTA AYODHYA

KOTA KASABLANKA  
LOFTVILLES TANGERANG  
LRT GATEWAY  
MADISON PARK  
MANGKULUHUR CITY  
MARIGOLD APARTMENTS  
MAQNA RESIDENCE  
MONROE APARTMENT JABABEKA  
PESONA SQUARE SOUTH SIDE  
PIK 2  
ROYAL SENTUL PARK  
RUSUN PERUMNAS ST. RAWA  
BUNTU  
SPRING RESIDENCE  
SOUTH GATE RESIDENCE  
THE ACCENT CONDOMINIUM  
THE LLOYD  
THE OASIS CIKARANG  
TOKYO RESIDENCE  
TRANSPARK BINTARO  
TRANSPARK CIBUBUR  
TRANSPARK JUANDA  
URBAN SKY  
URBAN TOWN  
WEST POINT

Granite Tile & Sintered stone

## **JAWA BARAT :**

DAIWA HOUSE  
GREEN PALACE

## **JAWA TENGAH :**

DHIKA UNIVERSE SOLO

## **JAWA TIMUR :**

CAPITAL SQUARE  
KLASKA RESIDENCE  
LINDEN APARTMENT  
MARVEL CITY  
OAKWOOD RESIDENCE  
ONE EAST RESIDENCE

## **SUMATERA :**

THE NOVE NUVASA BAY

## **BALI :**

LAVAYA CLUB NUSA DUA  
LAVAYA APARTMENT NUSA DUA



A row of modern landed houses at night. The houses are illuminated with warm interior and exterior lighting, highlighting their architectural details like columns, balconies, and large windows. The sky is dark, and some trees are visible in the foreground and background.

# Valentino Group

*Landed House*

# Project Reference

## Granite Tile & Sintered stone

MANILA RESIDENCE CINERE  
ARUBA VILLA  
ASYA RESIDENCE  
ASANA RESIDENCE  
BALI RESORT SERPONG EXTENTION  
BOGOR VILLAGE  
BUKIT GOLF CIMANGGIS  
BUONA VISTA CITRALAND  
CLUSTER PADMA GRIYA  
BALLROOM KIARA ARTHA PARK  
CLUSTER CARSON  
CLUSTER GANESHA  
CLUSTER AGATHIS  
CLUSTER PINEWOOD  
CLUSTER EVEREST  
CLUSTER UPTOWN CIKARANG  
CLUSTER CENDANA ICON  
CLUSTER CENDANA MARQ  
CLUSTER CENDANA NEST  
CLUSTER CENDANA GARDEN  
CLUSTER CENDANA CLOV'R  
CLUSTER GIRONA  
CLUSTER GIVERNY  
CLUSTER ANDORA  
CLUSTER LE BRASSUS TAHAP 1  
DISCOVERY ALTON  
THE ZORA KANADE

CLUSTER MONACO  
CLUSTER WOODCHESTER  
CLUSTER BRUNNERA  
BATIK SIGNATURE  
CLUSTER ATHERTON KOTA WISATA  
CLUSTER FASHYA GRIYA TAHAP 1  
CLUSTER FASHYA GRIYA TAHAP 2  
CLUSTER VICTORIA ALAM SUTERA  
CLUSTER GARDENVILLE CITRA RAYA  
CLUSTER NASHVILLE KOTA WISATA  
CLUSTER PALOMA CITRA RAYA  
CLUSTER ANGIRE BANJAR WIJAYA  
CLUSTER ELYSIA CIKUPA  
CLUSTER JADEITE BSD  
CLUSTER CHIAR SUVARNA SUTERA  
CLUSTER KAZUMI BSD  
CLUSTER CAELUS BSD  
CLUSTER KIARA PAYUNG, PURI BETA  
CLUSTER SEVILLE, PALEM SEMI  
CLUSTER SEMAYANG, ASYA  
CLUSTER BERYL  
CLUSTER NEO JADE MAKASAR  
CLUSTER ELDORA SUVARNA SUTERA  
CLUSTER LAVESH  
CLUSTER KERATON JABABEKA  
CLUSTER MONACO  
CLUSTER CANDI  
CLUSTER AURE BSD

CLUSTER FLEEK HOUSE BSD  
CLUSTER ASANA RESIDENCE CIKEAS  
CLUSTER ALEXANDRITE CIMANGGIS  
CLUSTER ALTEZZA  
CLUSTER CERTARA  
CLUSTER THE TREES  
CLUSTER MANINJAU ASYA  
CLUSTER MATANA ASYA  
CLUSTER HILAGO BSD CITY  
CLUSTER CLEMATISH  
CLUSTER MADISON  
CLUSTER PRIMROSE  
CLUSTER PROVIDENCE HOUSE SERPONG  
CLUSTER WISTERIA CAKUNG  
CLUSTER JURA  
CLUSTER NEW KUMALA CIMANGGIS  
CLUSTER CERTARA  
CLUSTER GREEN VILLE  
CLUSTER EAST MANHATTAN  
CLUSTER SEINE CITRA SENTUL RAYA  
CLUSTER THAMES CITRA SENTUL RAYA  
CLUSTER DANUBE CITRA SENTUL RAYA  
CLUSTER ORINOCO CITRA SENTUL RAYA  
CLUSTER TIBER CITRA SENTUL RAYA  
CLUSTER VOLGA CITRA SENTUL RAYA

# Project Reference

## Granite Tile & Sintered stone

CLUSTER 8 PARK AVENUE CITRA  
SENTUL RAYA  
CLUSTER BIANCA  
CLUSTER HANAIEI CITRA SENTUL  
RAYA  
CLUSTER MARTINEZ  
CLUSTER PALMYRA  
CLUSTER VICTORIA IV & V  
CLUSTER SUVARNA SUTERA  
CLUSTER NARADA  
CLUSTER DARU SURVANA SUTERA  
CLUSTER ZENA CENDANA SPRING  
CITRA GARDEN PURI  
CITRA GARDEN CITY MALANG  
CITRALAND TALLASA CITY MAKASAR  
CITRA GRAND CIBUBUR  
CITRA GRAND CBD CIBUBUR  
CITRA LAND CIBUBUR  
CITRA INDAH JONGGOL  
CIMANGGIS GOLF ESTATE  
DISCOVERY AMORE  
DANAU BOGOR RAYA  
D'CATALUNA RESIDENCE  
EMERALD MAUK  
EMERALD TERRACE  
EMERALD CILEBUT  
EMERALD CITY CIBINONG  
EMERALD NEOPOLIS KARAWANG

ECO RESIDENCE CITRA RAYA  
FKS LAND MAKASAR  
GOLDEN STONE CLUSTER AGATE &  
DIAMOND  
GOLDEN PLAZA  
GOLDEN PARK 2 & 3  
GOLDEN HILLS  
GOLDEN ESTESIA  
GOLDEN CITY BEKASI  
GOLDEN CITY  
GREENLAKE CITRALAND  
GRAHA GRANDE  
GRAND AL-IHSAN PREMIERE  
HARAPAN INDAH  
JAYALAND CLUSTER VALENCIA & OSAKA  
JABABEKA RESIDENCE  
KEMANG VERDE RESIDENCE BOGOR  
KEBAYORAN INFINITY JRP  
KEIA ZORA BSD  
LAVON II  
METLAND TRANSYOGI  
METLAND CILEUNGSI  
METLAND UJUNG MENTENG  
METLAND CIBITUNG  
METLAND PURI  
NEW BELLEFLEUR CITRA RAYA  
PROVENCE HOUSE  
PODOMORO PARK BUAH BATU

PAKUWON CITY SURABAYA  
PENTHOUSE PURI 11 KARANG TENGAH  
PREMIERE ESTATE JATIWARNAN  
PREMIERE ESTATE 2 & 3  
TAMANSARI METROPOLITAN MANADO  
CITRA LAND TALASSA CITY MAKASAR  
PERUMAHAN PODOMORO RIVER  
ROLLIG HILLS KARAWANG  
SPRINGVILLE RESIDENCE SURABAYA  
SUMMARECON MAKASAR  
SUMARECON BOGOR  
SUMARECON SERPONG  
SOMERHILL RESIDENCE  
TREVISTA PARK PONDOK PETIR  
TAMAN SARI PURI BALI  
THE GOLDEN STONE  
THE SPRINGS RESIDENCE CIPUTAT  
TAMANSARI METROPOLITAN MANADO  
TANJUNG BUNGA MAKASAR  
UVILLE JAYA REAL PROPERTY SAVIA PARK  
WATER TERRACE GRAND WISATA



A wide-angle photograph of a modern house under construction. The interior features a large, open space with a polished concrete floor. Two workers, wearing hard hats and work clothes, are standing on a raised wooden platform, working on the floor. The room is characterized by large, floor-to-ceiling glass windows and doors that offer a panoramic view of a lush green landscape with trees and a golf course. The ceiling is white with recessed lighting. The overall atmosphere is bright and airy, highlighting the architectural details and the connection to nature.

And the list of landed house projects will keep growing..





# Valentino Group

*Hotel*

# Project Reference

Granite Tile & Sintered stone

## **JABODETABEK :**

ACACIA HOTEL  
BUTTERFLY ASHLEY  
DAFAM TERASKITA  
FAVE HOTEL JABABEKA  
GRAND SOLL MARINA JATAKE  
HARRIS KELAPA GADING  
MANDARIN ORIENTAL HOTEL  
MAXONE HOTEL  
MERCURE SABANG  
SOLM ARINA SERPONG  
THE BELLEVUE SUITE

## **BANTEN :**

ASTON HOTEL ANYER

## **JAWATENGAH :**

BEST WESTERN SOLO  
TENTREM HOTEL SEMARANG

## **JAWA BARAT :**

ASTON KAHURIPAN  
HOLIDAY INN BANDUNG  
LIDO LAKE RESORT SUKABUMI  
NEO GUNTUR BANDUNG  
PESONA ALAM CISARUA  
SANTIKA HOTEL BANDUNG  
SANTIKA HOTEL SUKABUMI

## **JAWA TIMUR :**

AGOGO HOTEL  
ASTON HOTEL SIDOARJO  
MARVEL CITY HOTEL  
MIDTOWN  
SHERATON SURABAYA  
OAKWOOD

## **D.I YOGYAKARTA :**

KRISTINA GALLERY & HOTEL YOGJA

## **SUMATERA :**

ASTON JAMBI  
ASTON LAMPUNG  
GRAND ZURI PALEMBANG  
HHERPERS PALEMBANG  
SANTIKA HOTEL PALEMBANG

## **KALIMANTAN :**

IBIS BANJARMASIN  
IBIS MERCURE SAMARINA  
MIDTOWN HOTEL SAMARINDA

## **SULAWESI :**

GRANDHOTEL MALEO MAMUJU  
LAGOAN TAMAN SARI  
TERASKITA HOTEL MAKASSAR

## **BALI :**

PLATARAN UBUD  
RENEISSANCE HOTEL  
SANUR BALI HOTEL  
TRIBE BALI HOTEL  
UBUD HOTEL

## **LOMBOK :**

KAYANA LOMBOK  
SOMEWHERE LOMBOK



Valentino Group

*Shophouse*



# Project Reference

Granite Tile & Sintered stone

## **JABODETABEK :**

B OULEVARD BUSINESS CENTRE  
FRESH MARKET BINTARO  
FORESTA BUSINESS LOFT 3  
FORESTA BUSINESS LOFT 5  
FORESTA BUSINESS LOFT 6  
GRAND ARCADE CITRA RAYA  
OREGON SQUARE KOTAWISATA  
RUKO ARCADE JAYA REAL PROPERTY  
RUKO BIZ STREET CITRA RAYA  
RUKO CRYSTAL 8 ALAM SUTERA  
RUKO ICON 5 BSD  
TERRACE 8 CIKUPA  
UNIQLO

## **JAWA BARAT :**

RUKO CSR

## **SULAWESI :**

BUSINESS PARK CITRALAND CITY LOSARY  
SUNSET QUAY CITRALAND CITY LOSARY

## **LOMBOK :**

RUKO KUPANG NTT



Valentino Group

*Office*



BCA



# Project Reference

Granite Tile & Sintered stone

## **JABODETABEK :**

BCA FORESTA OFFICE  
BANK DANAMON  
BANK DKI  
BANK JASA JAKARTA  
CENTURY 21 OFFICE  
CIMB NIAGA  
CIPUTRA WORLD 1  
CITRA TOWER KEMAYORAN  
DATA SCRIPT KEMAYORAN  
DPSP BI  
GRAHA MANDIRI TASPEN  
GREEN OFFICE PARK 1 BSD  
ID EXPRESS OFFICE  
INDOMOBIL TOWER CAWANG  
JAKARTA BOX TOWER  
JIC OFFICE  
KOPERASI ASTRA  
LOT VIIABIDEX OFFICE BSD  
SERPONG  
MEDCO OFFICE  
MILLENIUM CENTENNIAL TOWER  
MUAMALAT TOWER  
NASDEM OFFICE  
OJK MATRAMAN  
ONE TOWER  
PIM 3 OFFICE TOWER  
PURI INDAH FINANCIAL TOWER  
SOHO  
PANCORAN  
THE PROMINENCE  
WASKITA CAWANG  
WASKITA RAJAWALI TOWER  
YODYA TOWER

## **JAWA TENGAH :**

OJK SOLO  
BANK MANDIRI  
TELKOMSEL OFFICE

## **JAWA TIMUR :**

GEDUNG PERKANTORAN  
PASURUAN  
PROYEK ARJASA, KALISAT  
JEMBER

## **SUMETARA :**

BANK BRI PEKAN BARU  
TELKOMSEL OFFICE ACEH

## **KALIMANTAN :**

BANK TANAH TIDUNG  
TELKOMSEL OFFICE ACEH

A photograph of a modern hospital complex at dusk. The scene features a tall, dark glass skyscraper on the left and a large, multi-story building with a complex, stepped facade in the center. A helicopter is visible on the roof of the central building. To the right, there is a smaller, more angular building with a glass facade. The sky is a deep blue, and the city lights are visible in the background. The text "Valentino Group" is overlaid in the top right corner, and "Hospital" is overlaid in the center.

Valentino Group

*Hospital*



# Project Reference

Granite Tile & Sintered stone

## **JABODETABEK :**

AMINAH TANGERANG  
AWALBROS BEKASI UTARA  
BRAWIJAYA SAHARJO  
BRAWIJAYA TEBET  
EKA HOSPITALBSD  
EMC TANGERANG  
FATMAWATI  
MANDAYA CIPONDOH  
MANDAYA PURI  
MAYAPADA HOSPITAL  
MITRA KELUARGA KELAPA GADING  
MULIA INSANI CIKUPA  
POLRI KRAMAT JATI  
KRIMAYA PASAR KEMIS  
RUSPAU HALIM  
TZU CHI

## **BANTEN :**

BHAYANGKARA BANTEN

## **MALUKU :**

RSUD LABUHA BACAN HALMAHERA

## **JAWA BARAT :**

PRIMAYA SUKABUMI  
RSUD SOEKARDJO  
TASIK MALAYA

## **JAWA TENGAH :**

PRIMAYA  
SEMARANG  
RS GENENG NGAWI

## **BALI :**

MANDALIKA  
POLTEKES MATARAM  
RS BADUNG BALI  
RS TABANAN BALI  
RSJ BANGLI  
RS PATUT PATUH PATJU  
RSUP BALI MANDARA  
SANJIWANI GIANYAR  
BALI  
SONDISINYA

## **JAWA TIMUR :**

IRJ SOETOMO  
ISLAMIC CENTER SURABAYA  
LABPARAMITHA  
MAYAPADA HOSPITAL  
PUSKESMAS SEDATI  
PUSKESMAS SUMENEP  
ROYAL SURABAYA  
RS HAJI GD STROKE  
RS JIWA MENUR  
RS MATA MASYARAKAT  
RS PROBOLINGGO  
RSUD DR. SOEDOMO TRENGGALEK  
RSUD JOMBANG  
RSUD KALIKEDINDING  
RSUD MARDI WALUYO BLITAR  
UBAYA

## **NUSA TENGGARA TIMUR :**

RSUD JOHANNES KUPANG  
RS UPT VERTIKAL KUPANG

# Valentino Group

*School & University*



# Project Reference

Granite Tile & Sintered stone

## **JABODETABEK :**

AL AZHAR SCHOOL  
BPK PENABUR SMAK 1  
DON BOSCO PONDOK INDAH  
INDONESIA HERITAGE  
FOUU=NDATION  
MAWAR SHARON CHRISTIAN SCHOOL  
PENABUR LEARNING CENTER  
PGV SCHOOL CIMANGGIS  
REVITALISASI PELATIHAN OLAHRAGA  
RAGUNAN  
SANTA LAURENSIA SUVARNA SUTERA  
STAN  
STRADA KEMAYORAN  
STIK POLRI KEBAYORAN LAMA  
UNIVERSITAS MULTIMEDIA  
NUSANTARA SERPONG

## **JAWA BARAT :**

REVITALISASI PELATIHAN OLAHRAGA  
RAGUNAN  
SANTA LAURENSIA SUVARNA SUTERA  
STAN  
STRADA KEMAYORAN  
STIK POLRI KEBAYORAN LAMA  
UNIVERSITAS MULTIMEDIA NUSANTARA  
SERPONG

# VALENTIN GRESS

# Thanks to our Clients





*Elevate your project with Valentino Group premium surface solutions.*

GRANITE TILE

**VALENTINO**  **GRESS** **SAKARMARBO**

**REMO** **RUDY GRESS**  **COLMAR**  **OXFORD**

Sintered Stone

**BLACK ROCK**  **GRESS**



The image displays a collection of decorative surface samples. At the top, several rectangular panels are stacked, showing different textures: a smooth grey surface, a surface with fine vertical ridges, and a surface with a more pronounced, wavy vertical texture. Below these, a panel with a light brown, wood-grain-like pattern is visible. Further down, a panel with a white, scale-like or fish-scale pattern is shown. In the foreground, there are two more samples: a vibrant blue panel with a dynamic, wavy, liquid-like texture, and a dark blue panel with a series of parallel, wavy ridges.

# *Decorative Surface*

Decorative Surface

 **ROSHAN**





# *Built to last. Designed to Flex.*

Roshan is a decorative surface brand by Valentino Group, offering advanced materials for those who demand more from their spaces.

In a world where beauty often compromises function, Roshan delivers both. Each material is carefully developed to enhance aesthetics without sacrificing strength.

Easy to install, designed to endure, and tailored for limitless creativity.

Roshan empowers architects, designers, and homeowners to go beyond traditional limitations—transforming interiors, exteriors, and every detail in between.

***ROSHAN***  
*Products*





SPC

WPC

FLEXTONE





SPC stands for Stone Polymer Composite — it's a type of strong, stylish flooring made by mixing crushed stone with plastic to create a solid, waterproof surface. Think of it as a super-tough floor that looks like wood or stone, but can handle spills, scratches, and heavy use.

It uses a special 2G Lock System, which means the planks easily click together without glue or nails. It's fast and clean to install.

**Available Sizes:**

- 150x750mm
- 180x1220mm
- 230x15.20mm

**Composition:**

PVC & Stone

**Application:**

- Residential flooring
- Offices flooring
- Hotel & Resort
- Gym Area

**Motifs**



Real Wood



***WPC Bamboo Charcoal Series***

This wall panel is made from a mix of polymer, natural fiber, and bamboo charcoal powder, making it stronger, lighter, and more durable than regular wall panels.

Thanks to the bamboo charcoal layer, it's not just tough — it also helps keep your space cooler and fresher.

**Available Sizes:**

2900x1220mm  
2800x1220mm

**Thickness:**  
8mm

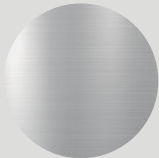
**Composition:**

PVC, Calcium silicate powder, bamboo charcoal powder with density 0.75

**Application:**

Interior Decoration  
Wall Covering  
Furniture Finishing  
Ceiling Coverage  
Room Partition Coverage

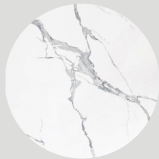
**Motifs**



Metal



Fabric



Marble



Wood





Made from a smart blend of polymer, natural fiber, and bamboo charcoal powder, this wall panel is stronger, lighter, and more durable than standard options. The bamboo charcoal layer helps cool your space naturally and keeps the air fresher.

Its continuous interlocking design makes installation easy and seamless — giving your walls a clean, modern finish.  
A practical, stylish choice for long-lasting interior upgrades.

**Available Sizes:**

2900x1220mm  
2800x1220mm

**Thickness:**

8mm

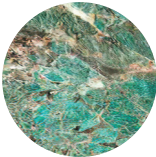
**Composition:**

PVC, Calcium silicate powder, bamboo charcoal powder  
with density 0.75

**Application:**

Interior Decoration  
Wall Covering

**Motifs**



Marble



**WPC Fluted Series**

These wall panels are made from a mix of polymer, stone powder, and bamboo powder — built to be strong, water-resistant, and termite-proof. They look like real wood, but last longer and need less care.

With many size options, they’re perfect for all kinds of spaces — from walls and ceilings to furniture and room dividers.

They also come with a grooved (fluted) texture that gives your room a stylish, modern look.

**Available Sizes:**

- 2900x233x53mm
- 2900x172x9mm
- 2900x160x20mm
- 2900x159x15mm
- 2900x150x15mm
- 2900x148x13.5mm
- 2900x80x14mm
- 2900x55x29mm
- 2900x52x25mm

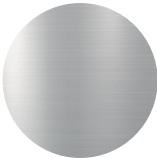
**Composition:**

PVC, Stone powder, Bamboo powder, Stabilizer and Processing aids

**Application:**

- Interior Decoration
- Wall Covering
- Furniture Finishing
- Ceiling Coverage
- Room Partition Coverage

**Motifs**



Metal



Fabric



Wood





## WPC Outdoor Series

This outdoor panel is made from a smart mix of wood fiber and strong polymer — built to handle sun, rain, and changing weather.

It's perfect for walls, ceilings, and floors outside your home, giving a natural wood look without the usual worries.

Tough against water, termites, and cracks — and super easy to maintain.

### Available Sizes:

2900x140x23mm  
2900x219x26mm  
2900x157x21mm  
2900x150x50mm  
2900x100x50mm  
2900x50x50mm  
2200x138x23mm

### Composition:

Wood fiber, HDPE, Additives,  
the capped surface layer is  
100% HDPE.

### Application:

Exterior walls  
Ceilings  
and Flooring

### Motifs



Wood





A super flexible wall panel made from real stone and special polymer.

It's thin, light, and bends easily — so you can use it on straight or curved surfaces.  
Perfect for giving your walls and ceilings a natural stone look, without the heavy weight.

**Available Sizes:**

600x1200mm

**Thickness:**

8mm

**Composition:**

85% Real stone powder,  
mixed with safe and strong  
materials like acrylic and  
glass mesh.

**Application:**

Exterior walls  
Ceilings  
Interior decoration (like  
backdrops)

**Motifs**



Stone

**ROSHAN**

*Thanks to our  
Clients*



GALAXY MALL







*Sanitary*

Authorized Dealer

**KOHLER**



A man and a woman are standing in a modern bathroom showroom, looking at a large white bathtub. The man is wearing a green jacket and the woman is wearing a grey blazer. They are surrounded by various bathroom fixtures, including sinks, mirrors, and light fixtures. The background features a wall with many different light fixtures and a large mirror. The overall atmosphere is sophisticated and modern.

# *Bringing World's Best to Every Space*

As an authorized dealer of KOHLER®, Valentino Group reinforces its commitment to curating only the most trusted global brands. From luxurious residences to large-scale commercial developments, our partnership with KOHLER allows us to deliver timeless design, lasting performance, and world-class innovation in sanitary solutions — built for the most demanding projects.

Because every detail matters — from surface to sanitary.





# KOHLER®

## *Thanks to our Clients*

  
**CIPUTRA HEALTHCARE**  
*Care For Your Health & Happiness*

  
**CITRALAND**  
PALEMBANG

  
**CITRA GRAND**  
SEMARANG

  
**CITRALAND**  
Serenity at The Hill  
PUNCAK TIDAR MALANG

  
**CITRALAND CELEBES**  
The Art of Green Living

  
**CITRA GRAND CITY**  
The International Lifestyle  
PALEMBANG

  
**SUMMARECON**  
SERPONG  
Better living, Better future

  
**SUMMARECON**  
CROWN GADING

  
**SUMMARECON**  
BOGOR

  
**SUMMARECON**  
BEKASI

  
**SUMMARECON**  
MUTIARA  
NEW CITY, NEW OPPORTUNITY

  
**summarecon**  
BANDUNG

  
**PAKUWON GROUP**

**AstraLand**  
Indonesia

  
**CIMANGGIS**  
GOLF ESTATE

  
**JGE**  
JAGORAWI  
GOLF ESTATES

**Metland**

  
**mayapada**  
hospital  
Experience Better Care

  
**SERPONG M-TOWN**

  
**SUARANA SUTERA**  
residence @sutra

  
**Artha Batam**  
Sanctuary  
Private Residence

  
**THE**  
SANCTUARY  
COLLECTIVE

  
**TUSHI MAJA**  
BLOW YOUR TASTE

**SHILA**  
AT SAWANGAN  
LAKE LIVING EMBRACED BY NATURE

  
**JAYA**  
PROPERTY

  
**royal plaza**

  
**TUNJUNGAN PLAZA**

  
**JABABEKA**  
RESIDENCE  
A City for Your World

  
**Golden Sawangan**

  
**BALLY**  
HOTEL & LOUVE ROYAL CENTER  
SULAWESI

  
**TRANS**  
ICON MALL  
SURABAYA

  
**BIO** District

  
**BALI RESORT**

# HOUSE OF VALENTINO

## **JAKARTA**

House of Valentino  
Head Office & Showroom  
Jl. Percetakan Negara C253  
Phone: 021 - 4208405

House of Valentino  
Jl. Percetakan Negara No. 22-23B  
Komplek Pertokoan Rawasari Mas,  
Jakarta Pusat.  
Phone: 021 - 42805750

## **TANGERANG**

House of Valentino  
Ruko Palmyra Square,  
Jl. Jalur Sutera Blok 25A No.36,  
Kunciran, Serpong Utara.  
Phone: 021 - 29314866

HOUSE OF VALENTINO  
Ruko Garden Vienna,  
Jl. Komp. BSD No.20,  
Rawa Buntu, Serpong Sub-District.  
Phone: 021 - 75677153

## **BOGOR**

Super Depo  
Jl. Raya Cikuda Wnherang No. 8 B,  
Cileungsi, Kab.Bogor.  
Phone: 0852 1141 0009

## **BEKASI**

Super Depo  
Jl. Raya Jatiasih No.185,  
Jatiasih, Kota Bekasi.  
Phone: 0813 8777 7185

## **SURABAYA**

House of Valentino  
Jl. Baliwerti 103.  
Phone: 031 - 5479765



Lets Dream. Build. Live  
with VALENTIN  GROUP





VALENTIN  GROUP

Dream. Build. Live.